



الجمهورية الجزائرية الديمقراطية الشعبية
République Algérienne Démocratique et Populaire
Ministère de l'enseignement Supérieur et de la Recherche scientifique
Université Mohamed Khider Biskra
Faculté des Sciences et de la Technologie
Département de Génie Electrique
Master 1 Energie renouvelable



Module Technical English

Professor dr. Okba KRAA

year 2021-2022

TABLE OF CONTENTS

- 1. Introduction**
- 2. renewable energy and non renewable energy**
- 3. Types of renewable energy resources**

1. Introduction

Our everyday activities **depend heavily** on energy. Traditional **fossil fuels** like coal, oil and natural gas, however, **pollute** the environment, and it is becoming more and more **expensive** to find and **extract** them. Furthermore, we are running out of them. So, it is very urgent to find new sources to meet the **increasing** energy **needs** of the **growing** population of the Earth.

Eco-friendly, or green energy sources like solar and wind power, hydropower and biomass do not have a negative impact on the environment. They are also renewable, which means we will never run out of them as they are continuously replenished.

1.1 Term definition

depend heavily	
fossil fuels	
pollute	
expensive	
extract	
increasing	
needs	
growing	

1.1 Term definition

Eco-friendly	
green energy	
impact	
continuously replenished	

Renewable energy?

Energy derived from resources that are **regenerative** or for all practical **purposes** can not be **depleted**.

non renewable energy ?

Energy derived from resources that cannot be easily made or "renewed,".

Exercise 1

a) Which of these energy resources are renewable?

- wind energy
- coal
- oil
- solar energy
- hydropower
- natural gas
- biomass

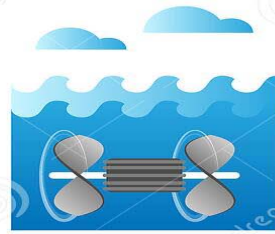
b) fill in the gaps with the correct name of source in the picture below

ENERGY SOURCES

RENEWABLE ENERGY



Wind energy



.....

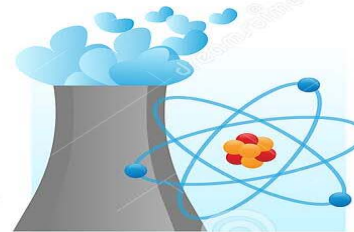
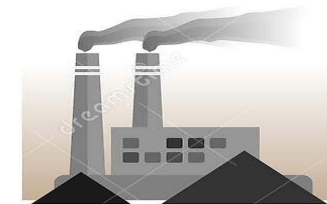


.....



.....

NON-RENEWABLE ENERGY



c) Match the words to form phrases

- fossil needs
- Depend an impact on something
- to have on something
- to meet fuel

3. Benefits of Renewable Energy Use

Renewable energy wind, solar, geothermal, hydroelectric, and biomass provides a lot of benefits for our climate, our health, and our economy.

Human activity is **overloading** our atmosphere with carbon dioxide and other **greenhouse** gas emissions, which **trap** heat, **steadily** drive up the planet's temperature, and create significant and harmful impacts on our health, our environment, and our climate.

Electricity production accounts for more than one-third of U.S. greenhouse gas emissions, with the majority generated by coal-fired power plants, which produce approximately 25 percent of total U.S. greenhouse gas emissions; natural gas-fired power plants produce 6 percent of total emissions. In **contrast**, most renewable energy sources produce little to no greenhouse gas emissions. (...)

Generating electricity from renewable energy rather than fossil fuels offers significant public health benefits. (...) Replacing fossil fuels with renewable energy has been found to reduce **premature** mortality and lost workdays, and it reduces overall health care costs. (...)

Compared with fossil fuel technologies, which are **typically mechanized** and **capital intensive**, the **renewable energy industry** is more **labor-intensive**. This means that, on **average**, more jobs are created for each unit of electricity generated from renewable sources than from fossil fuels. (...)

.

While renewable facilities **require upfront** investments to build, once built they operate at very low cost and, for most technologies, the fuel is free. As a result, renewable energy prices are **relatively** stable over time. (...) In contrast, fossil fuel prices can vary dramatically and are **prone to substantial price swings**

Choose the best answer on the basis of the previous text.

Renewable energy has ...

a) a lot of benefits. b) very few benefits.

Carbon dioxide is a

a) greenhouse gas.

b) b) renewable gas.

Choose the best answer on the basis of the previous text.

Electricity generation

- a) is responsible for more than 1/3 of greenhouse gas emissions in the US.
- b) b) reduces greenhouse gas emissions by one-third in the US.

Most of the energy in the US is

- a) generated by coal-fired power plants.
- b) natural gas-fired power plants.

Choose the best answer on the basis of the previous text.

Premature mortality means

- a) early deaths.
- b) early birth

Renewable energy facilities (e.g. wind farms, solar panels) are expensive ... and cheap

- a) to use; to build
- b) to build; to use

Exercise 2

check the meanings of the red words in a dictionary