

# Introduction to Artistic & Technical Drawing in Architecture

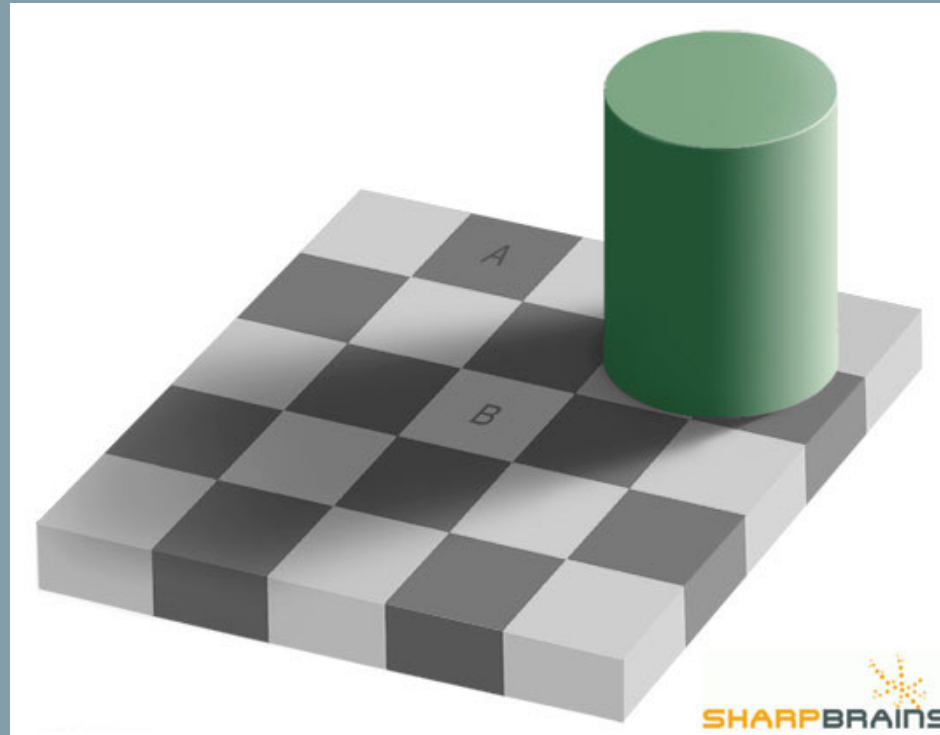


# Vision between real and unreal



What we see is not always true is not always reality

# Sight is a physiological phenomenon

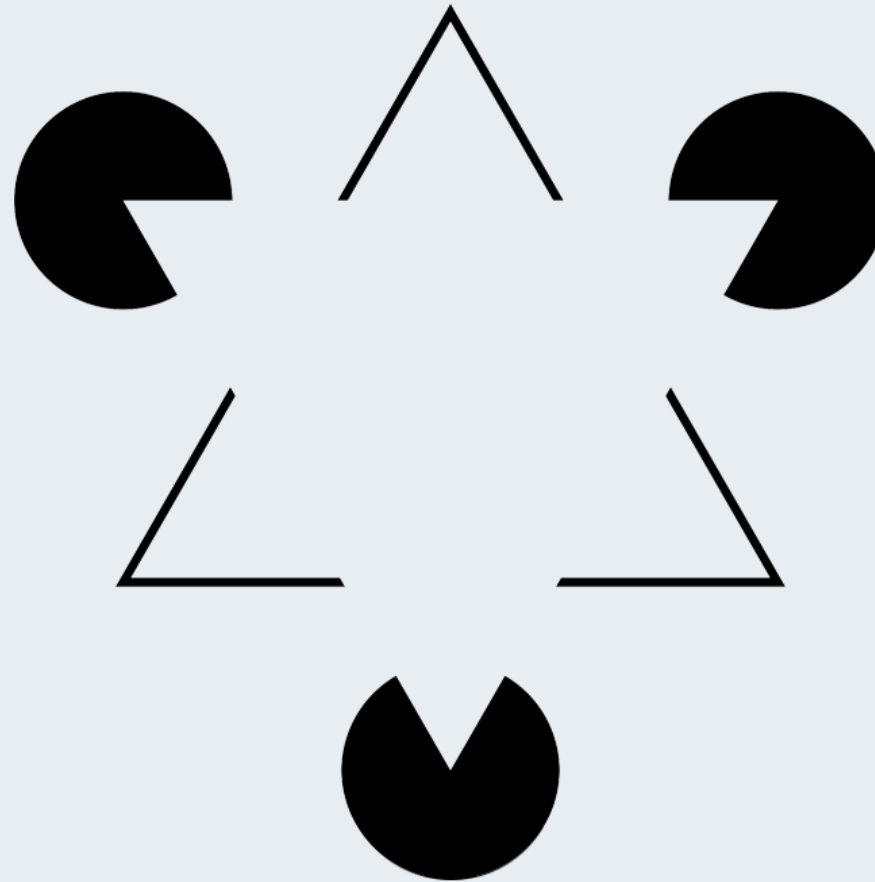


Sight is also an emotional act

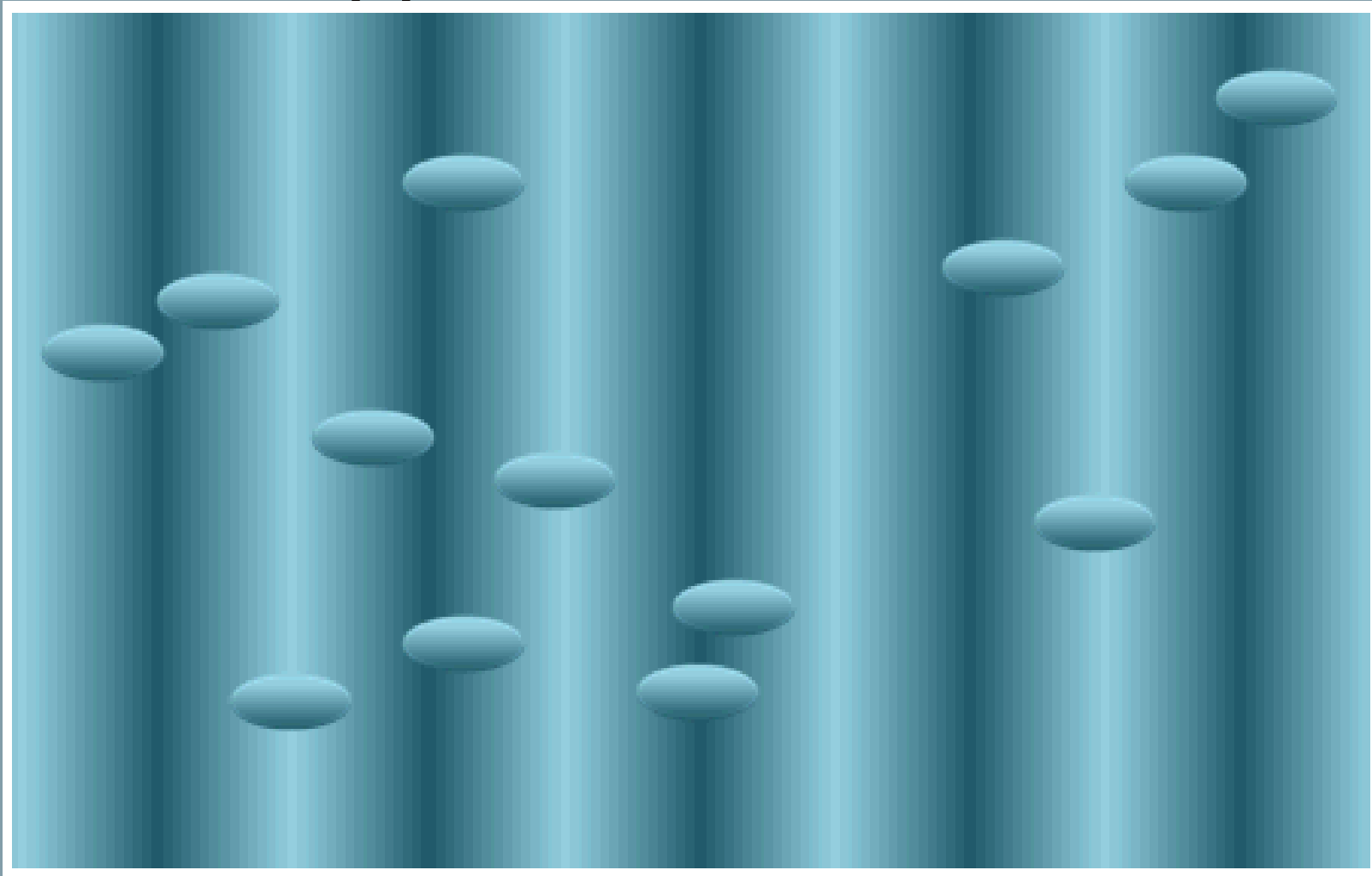
*Perception is an informed process  
(Gestalt theory)*



*Perception is an informed process  
(Gestalt theory)*



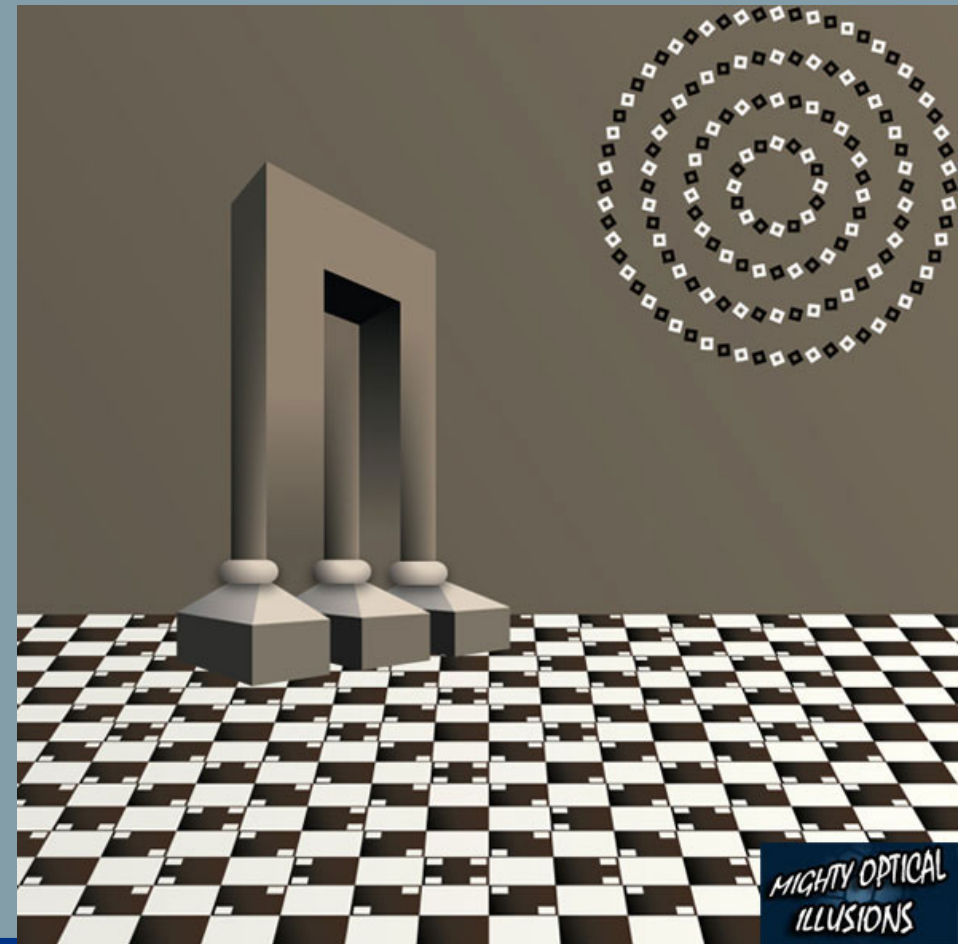
# Apprehension Levels



See Look Observe but also Feel

# Art and Architecture at the crossroads

Trilogy:  
Physiological  
Emotional  
Cultural





# Representation of Architecture through Art Drawing



# Art Drawing

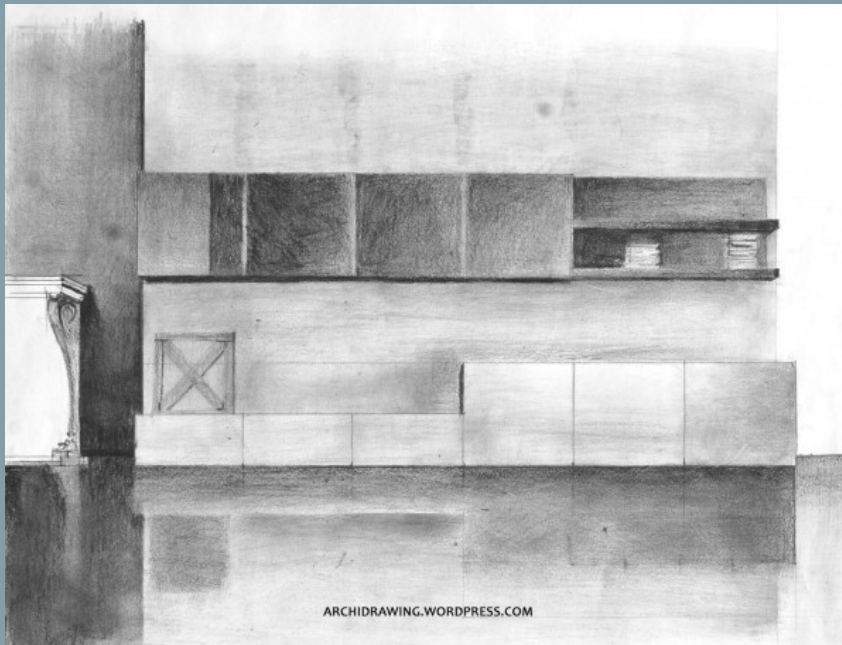
- Two methods of representing an object:

1. ***Linear drawing, Objective, Exact, Scientific***

***Goals:*** Provide accurate data on the dimensions and construction of an object

2. **Artistical drawing...**

# Art & Architecture Drawing



# Art Drawing & Means of Expression

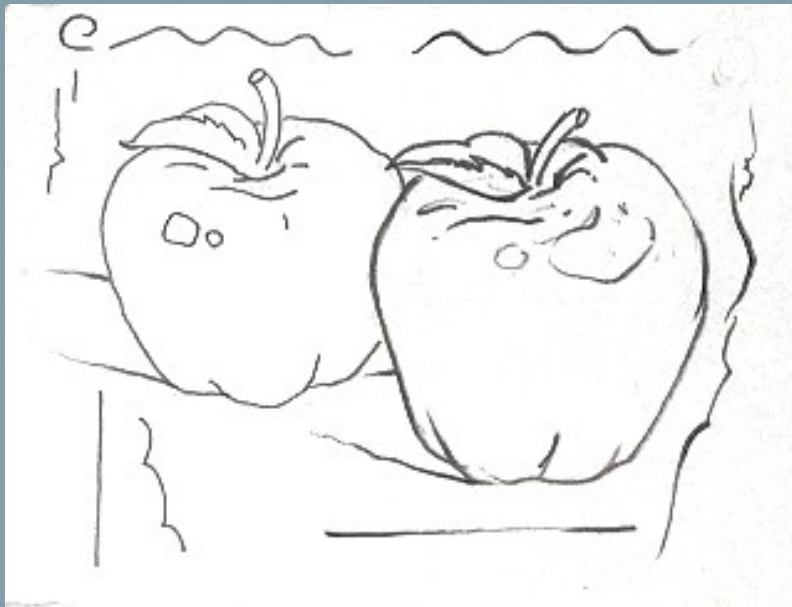
- Two means of expression:

1. Strokes or lines

2. Oppositions and degrees of shadows and lights: Values.

1. Draw the outline of the object with a line
2. Complete the line drawing with values
3. Render object only by values

# Art Drawing & Means of Expression



# Art Drawing

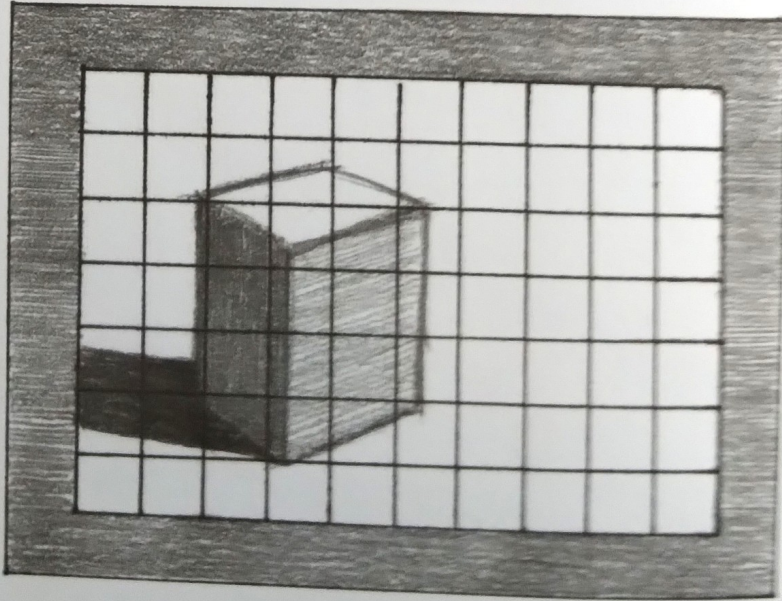
- ***Artistic Drawing***

***Consists of:*** graphically translating the impression received when looking at an object from a certain angle. Subjective Method

***Depends on :***

1. Observation (***sight drawing***),
2. Sensitivity (***Expression***)

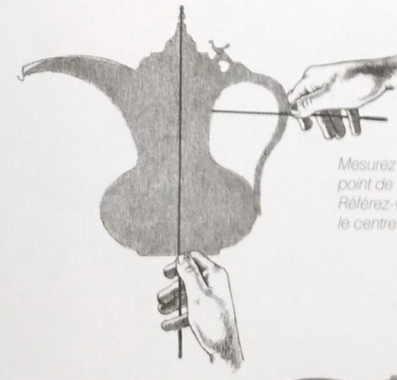
La mise au carreau aide à définir les angles des côtés par rapport aux horizontales et aux verticales.



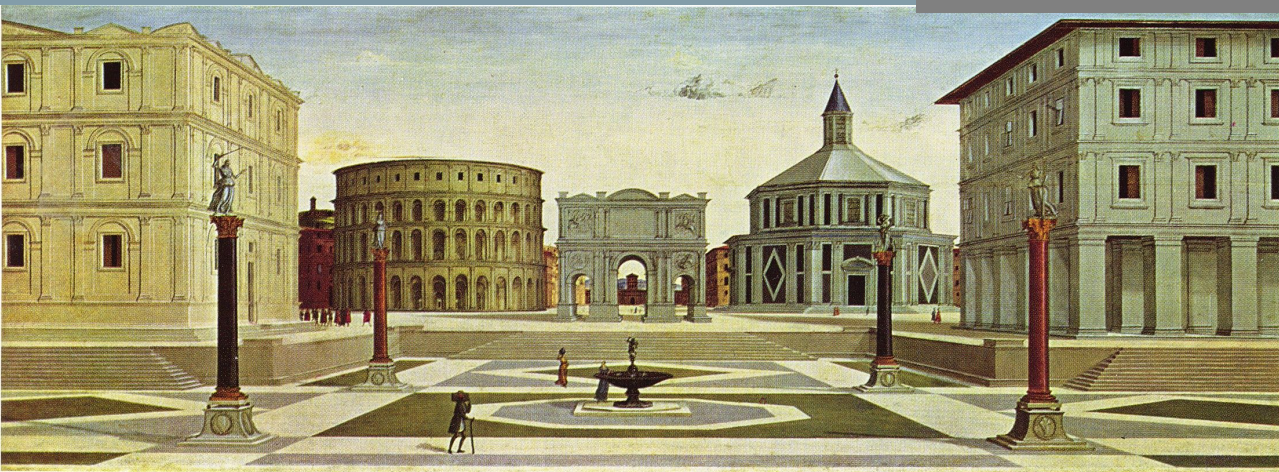
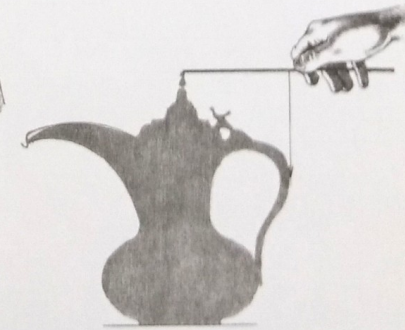
Afin de respecter les proportions, comparez la distance entre les points haut et bas de l'anse avec la hauteur totale de la théière.



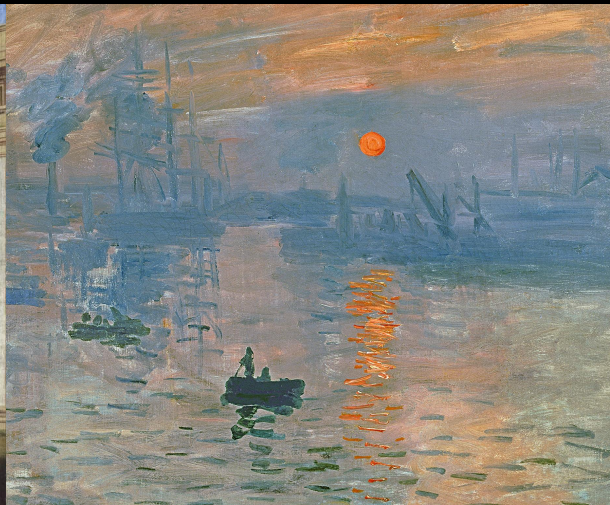
Mesurez la distance jusqu'au point extérieur de l'anse le plus éloigné de la théière et calculez sa proportion par rapport à la hauteur totale.



Mesurez ensuite la distance séparant ce point de l'axe de symétrie de la théière. Référez-vous ici à son point le plus haut, le centre du couvercle.



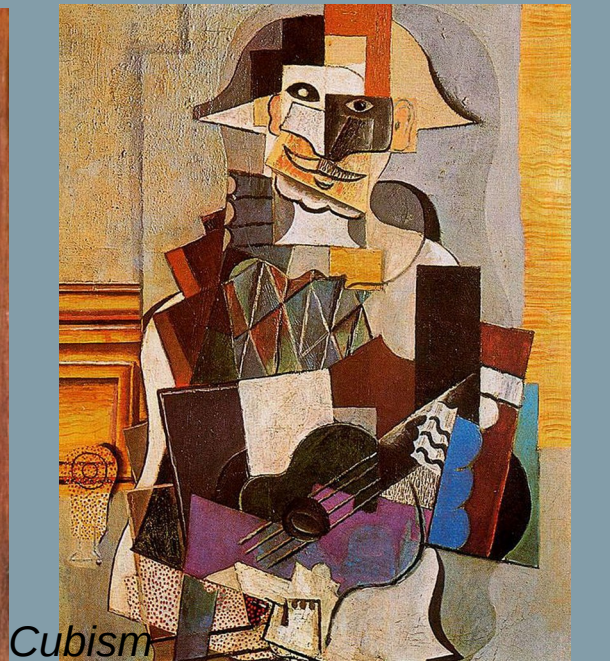
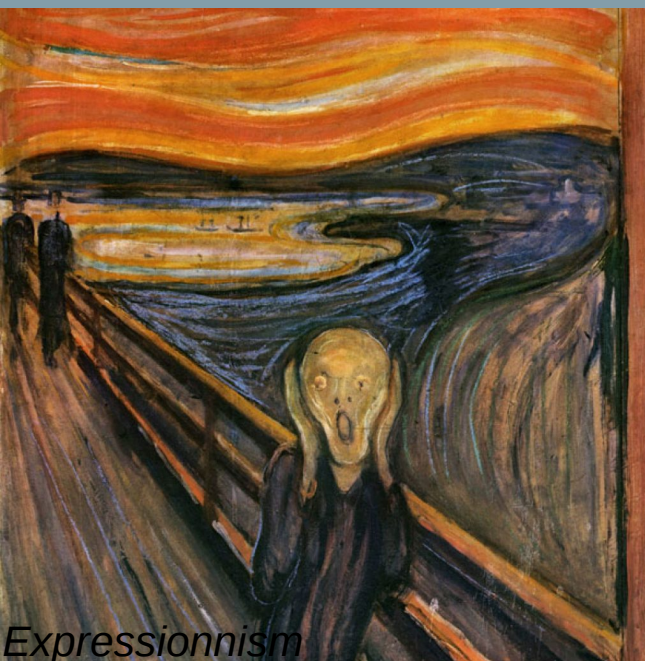
*sight drawing*



*Classicism/romantism/realism*

*Impressionism*

*Fauvism*



*Expressionnism*

*Cubism*

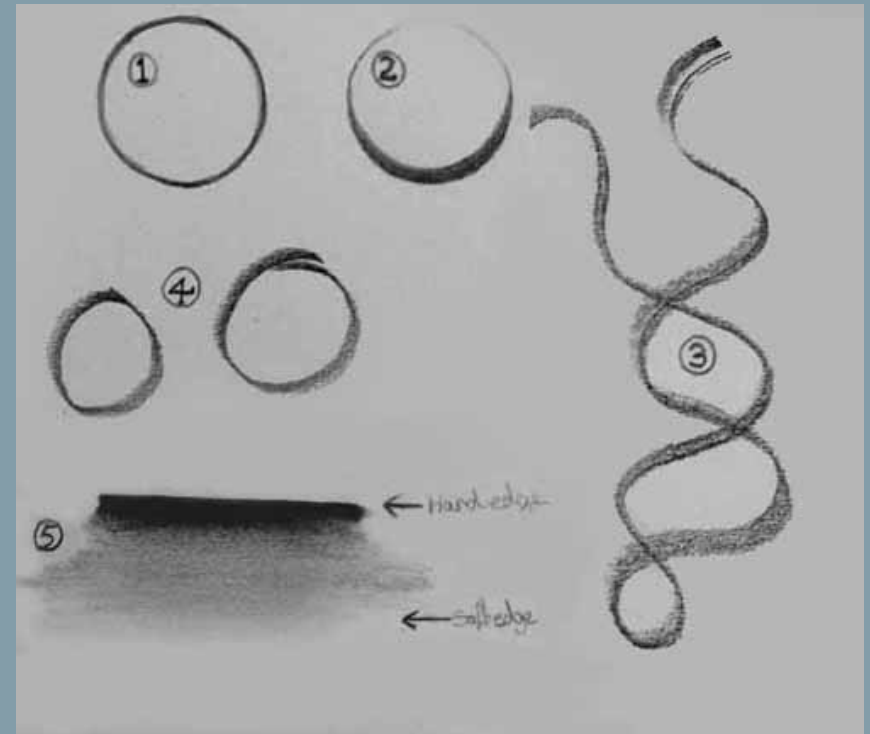
*Abstract art*

# Dynamism of Lines and Values

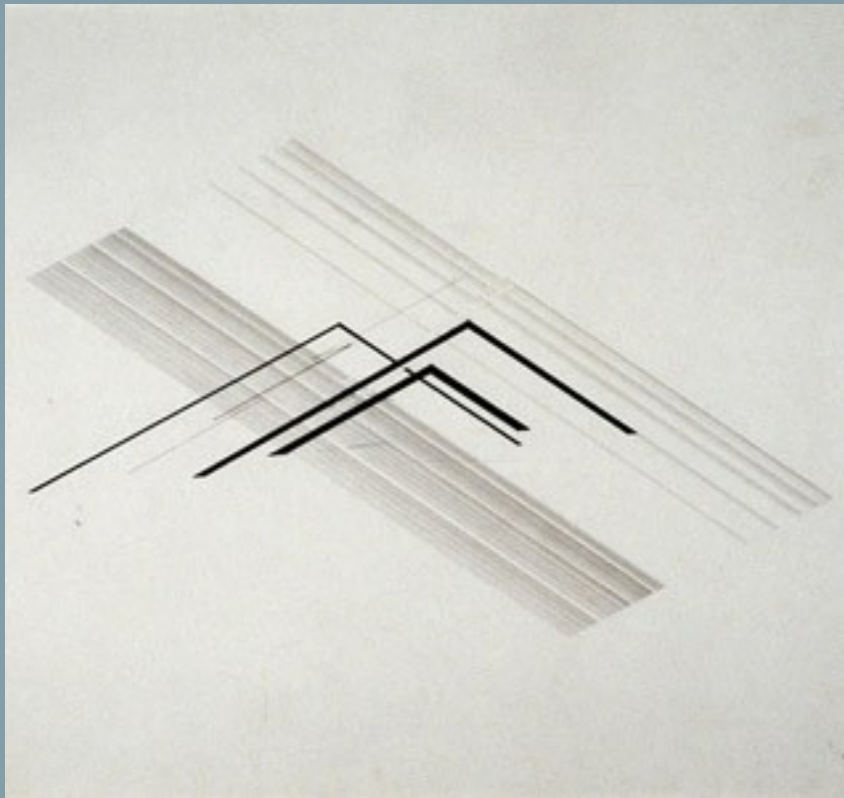
- **Lines:** Curved or Straight
- Line following its character indicates:
  1. *Rhythm*
  2. *State of mind*
  3. *Impression*



# Dynamism of Lines and Values



# Dynamism of Lines and Values

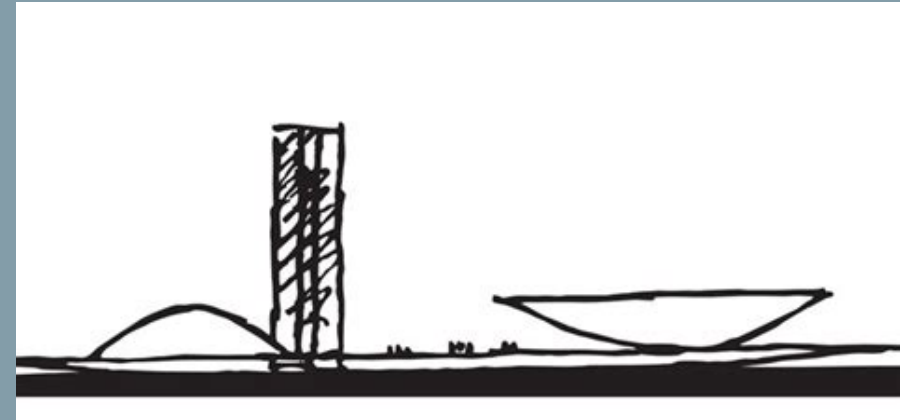


# Character of Lines

- Horizontal Straight Line:

*Calm and Mastery*

Evoque: Space and Rest



Oscar Niemeyer

# Character of Lines



- **Straight Ascending Line:**
- ***Firmness and Decision***
- **Expresses:** Elevation and Affirmation

## **Descending Line:**

- ***gesture of abandonment***
- **Suggests:** Weariness and renunciation



# Character of Lines

- Oblique straight or sinuous line:

*Action & Liveliness*

Express: Dynamism and Movement



Jackson Pollock

# Character of Lines

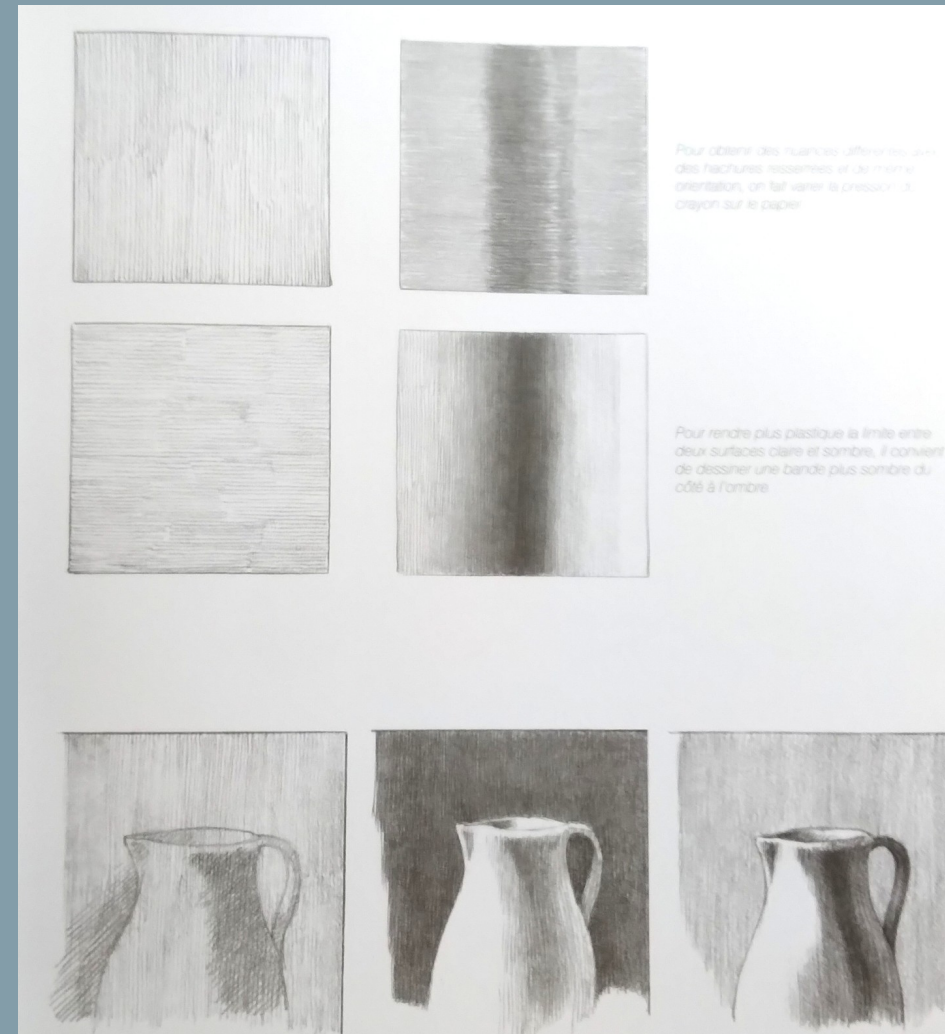
- *The curved line:*

*Feeling of tenderness and Protection*



# Value Characters

- The line :
  - Constitute the framework of the drawing
- Values
  - represent the illusion of the 3 Dimension and Volume
  - Create Atmosphere, Ambiance, Light and Space between objects



# Value Characters

- The Values express:

*Light modulation on volumes*

*Shade Gradient: Lightest shade to darkest shade*

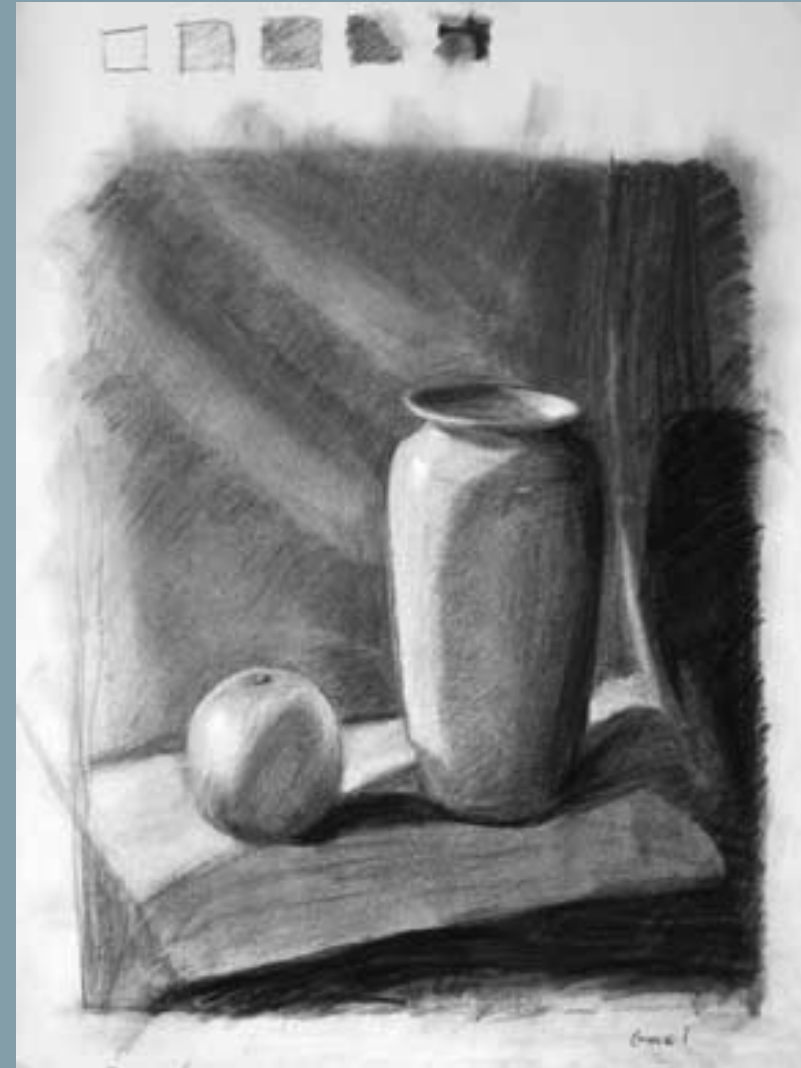
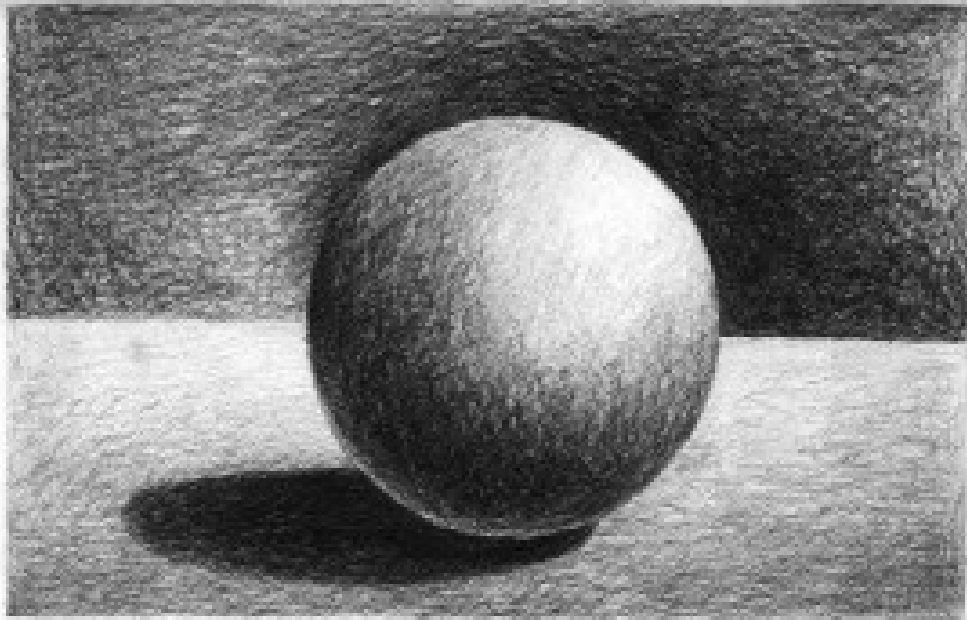
*The Nature of the Object*

*Distances: Object/Observer*





# Value Characters



# Art Drawing and Intentions

- *Drawing Implies Intention*

## Intentions:

*1) The translation of the impression we receive from an Object*

*2) Personal Vision of Reality*

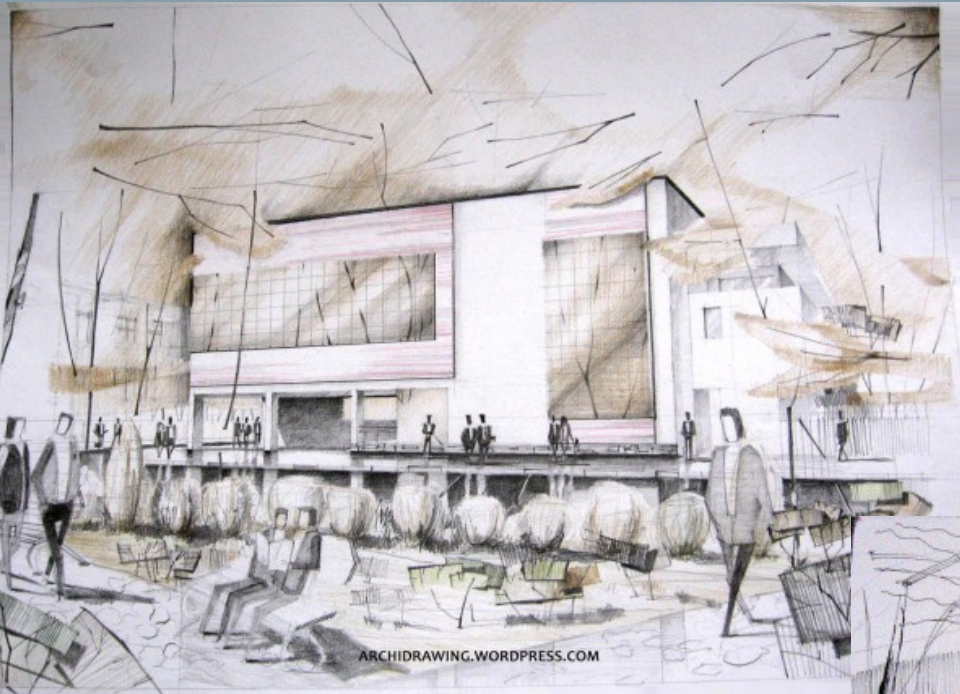
# Art Drawing and Intentions



# Art Drawing and Intentions

- *The artist needs to express his Intentions:*
  - 1) *The sense of Observation*
  - 2) *A Sensitive Visual Memory*
  - 3) *Technical Mastery of Drawing*

# Art Drawing and Intentions



# Art Drawing & Composition

## Composition in Art Drawing

=

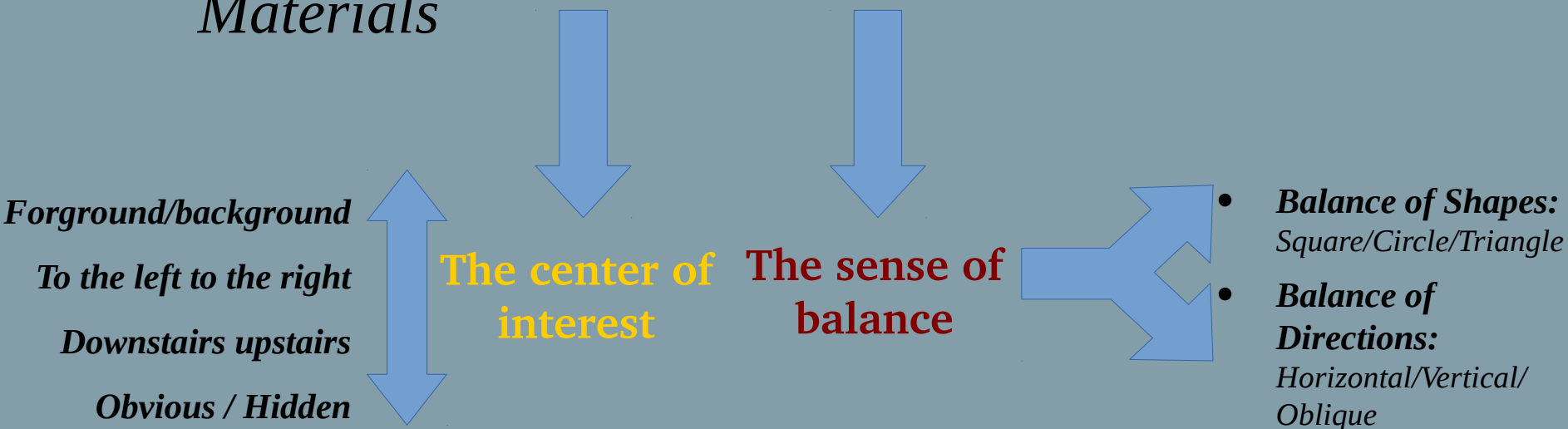
## Main lines of the drawing

- The composition:
  - *Choice of an Object of a Site, of a Landscape, its framing*
  - *Distance Subject / Object*
  - *The Frame Limits the Drawing*

# Art Drawing & Composition

- **Composition Objectives:**

- *Harmony in Diversity*
- *The play of Lights and Shadows*
- *The Subtle Relationships Between Forms and Materials*



# Art Drawing and Composition Continued

- *Artistic Composition = Center of Interest*

*To the left to the right*

*Downstairs upstairs*

*Obvious / Hidden*



# Art Drawing and Composition Continued

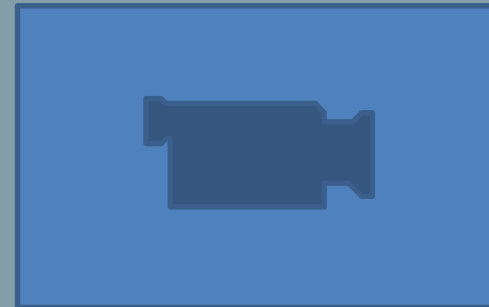


# Artistic Media

2D to 3D video



Art & Architecture Drawing



Traits & Values Video

